

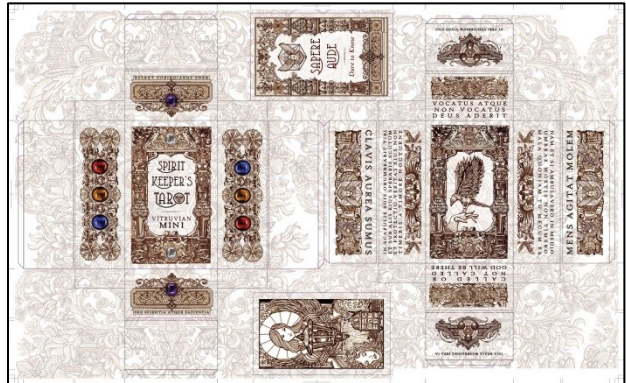
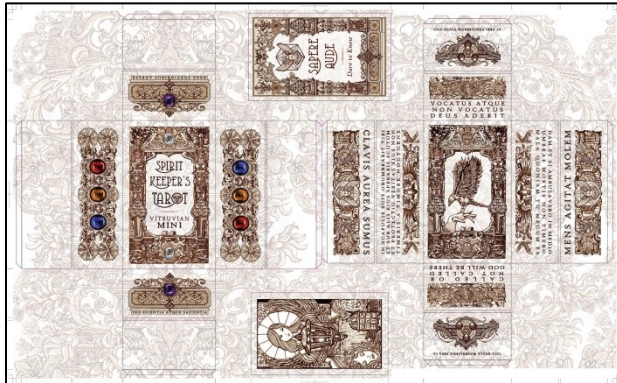
INSTRUCTIONS FOR PRINTING YOUR SKT VITRUVIAN MINI

All Cards Printable Sheets

1. Open the PDF file “SKT Vitruvian Mini (Printables) All Cards” on your desktop computer.
2. Click on the option to Print. Before printing, make sure “**Pages to Print**” is set to “**All**.”
3. Under the printer settings “**Page Sizing & Handling**,” make sure the radio button “**Actual size**” is selected. If you’re using a printer with multiple trays of different size paper, then make sure the box “Choose paper source by PDF page size” is selected and one of the tray options is US Letter (8.5” x 11”).



4. Make sure the box “**Print on both sides of paper**” is selected. Then select the radio button “**Flip on long edge.**”
5. Before printing, click on the bar, “**Page Setup...**” and confirm that the Paper size selected is **Letter (8 ½ x 11 in)** and the Orientation is **Portrait**.
6. Then click “Print.”



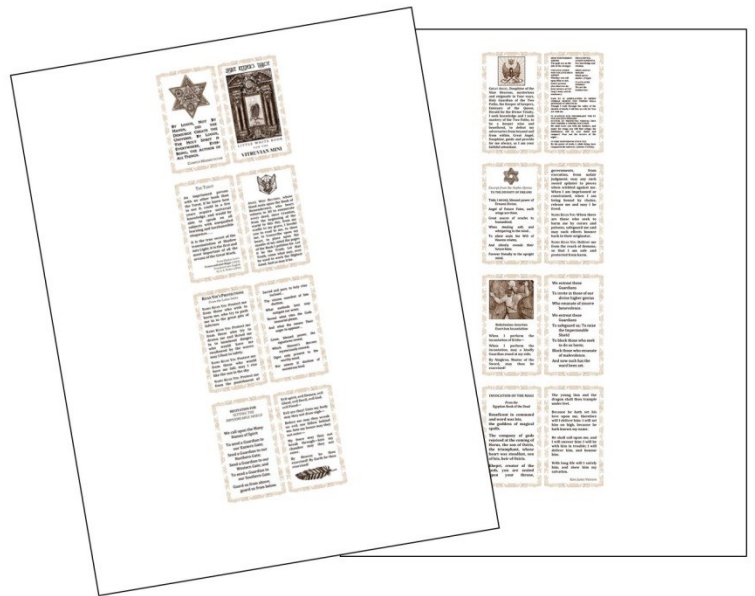
The Box

1. There are TWO options: Box Design EASY and Box Design FANCY. Open the selected PDF file on your desktop computer.
2. Click on the option to Print. Before printing, make sure “**Pages to Print**” is set to “**All**.”

3. Under the printer settings “**Page Sizing & Handling**,” make sure the radio button “**Actual size**” is selected. If you’re using a printer with multiple trays of different size paper, then make sure the box “Choose paper source by PDF page size” is selected and one of the tray options is US Letter (8.5” x 11”).
4. Before printing, click on the bar, “**Page Setup...**” and confirm that the Paper size selected is **Letter (8 ½ x 11 in)** and the Orientation is **Landscape**.
5. Then click “Print.”

The LWB of Prayers

1. Open the PDF file “SKT Vitruvian Mini (Printables) LWB” on your desktop computer.
2. Click on the option to Print. Before printing, make sure “**Pages to Print**” is set to “**All**.”
3. Under the printer settings “**Page Sizing & Handling**,” make sure the radio button “**Actual size**” is selected. If you’re using a printer with multiple trays of different size paper, then make sure the box “Choose paper source by PDF Page size” is selected and one of the tray options is US Letter (8.5” x 11”).



4. Before printing, click on the bar “**Page Setup...**” and confirm that the Paper size selected is **Letter (8 ½ x 11 in)** and the Orientation is **Portrait**.
5. Then click “Print.”

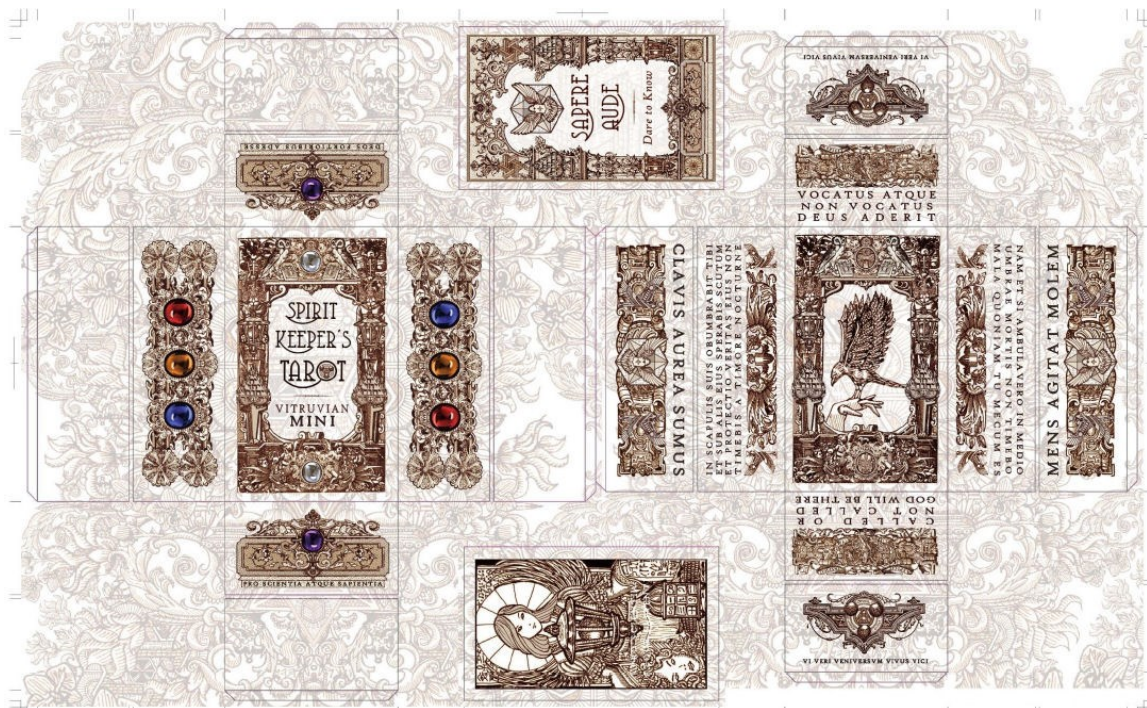
INSTRUCTIONS FOR ASSEMBLING YOUR SKT VITRUVIAN MINI

To Assemble the 80 Tarot Cards

1. There is an optional initial step of laminating the printed sheets. I use clear packing tape, which you can get inexpensively at any office supply store, and tape up both sides of each sheet of cards.
2. Cut the cards out one by one, carefully so as not to crop off any of the top or bottom captions. Note that if there was even a 0.2 mm misalignment with the way your printer fed paper for double-sided printing, the cards along the edges can be misaligned slightly.
3. The final optional step here is to round the four corners of every card with a corner rounder. I find that this little touch adds substantially to the overall aesthetics of your Mini deck, so my recommendation would be to invest the time in rounding all the corners.

To Assemble the Top and Bottom Lids of the Deck Box

1. There is an optional initial step of laminating the printed sheets. I strongly recommend doing this, as it reinforces the box significantly, rendering it more resistant to the inevitable wear and tear it would sustain when you take it on the go.
2. The EASY version requires tape and, at your option, a glue stick. Tape lines will be visible. However, if you laminate the box first, the tape lines from the assembly job are almost invisible.
3. The FANCY version requires a gel glue, such as a craft glue. There will be no visible tape lines (because you are not using any tape...) and all sealed edges will be clean and well concealed. However, the Fancy version can be a little trickier and does require a little more skill in the arts and crafts department.



EASY VERSION



4. FOR THE EASY VERSION, cut out the top lid and interior image for the top lid, as pictured above.



5. Fold the four walls in as pictured in the above photograph. Tape or glue these four flaps down.



6. Place the interior lid design into that center area and tape or glue it into place. The front of your top lid will look like what you see in the above right photograph.



7. Fold in the walls and tape together at the seams. In the Easy Version, your tape lines along the seams will be visible, but if you laminate the box first, these seams will be much harder to see.



8. Affix tape to both the interior and exterior of the corners. Notice how in the above, a sliver of un-taped edge peeks out. If you don't want that, then take care to align your tape as close to the outer edge as possible, so the seams are taped together perfectly.
9. Repeat for all four corners.
10. *Optional.* As noted in the video tutorial, you can trace the semicircle from a coin along the longer walls for a semicircle cutout. The cutout will make the top lid easier to remove from the bottom lid.
11. The process for assembling the bottom lid of the deck box is the same as instructed for the top lid of the deck box.



FANCY VERSION

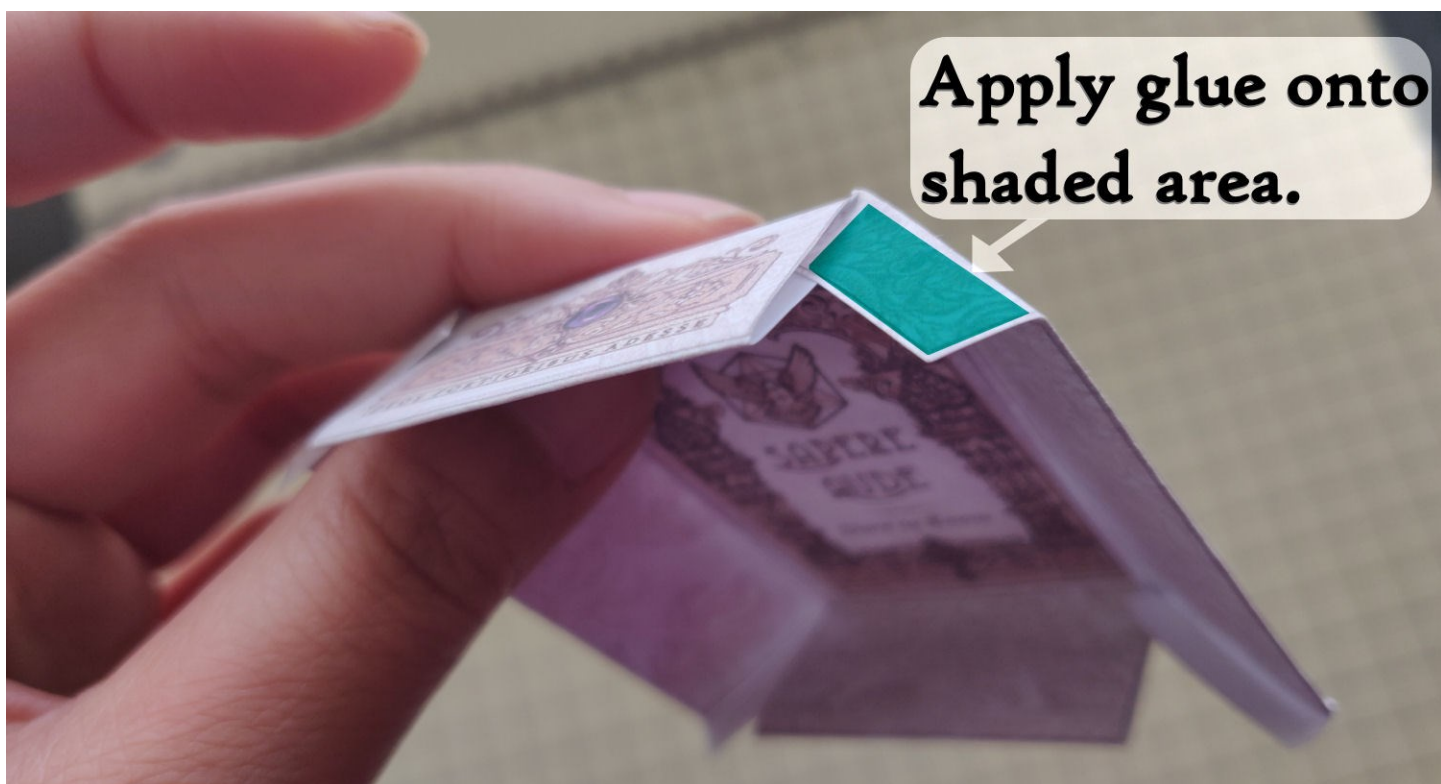
1. FOR THE FANCY VERSION, start by folding the four walls in as shown in the below photograph.





2. Glue down the four flaps, but you must make sure you don't glue down the entire outer wall to the inner wall, because you will be tucking that extra flap into the space between the outer wall and inner wall. Line glue along the shaded edge only, as highlighted in the above photograph.
3. Glue the card-size rectangle to the bottom wall. When using glue, a good tip here is to use a brush to paint the glue on evenly, or you can simply use your fingertips to smooth out the glue evenly, in a thin coating or layer across the entirety of the card-size rectangle. That way the interior sheet you're gluing on won't crease, wrinkle, or bubble unevenly.
4. Crease and fold the excess flaps where the glue will be applied. Also fold up the four walls and pictured in the subsequent photographs on the next page.
5. If you want to include the semicircle cut-outs along the long, vertical walls, trace it from a small coin and cut the semicircle out now, before assembling the box.





6. Apply an even layer of glue onto the shaded area pictured above. This is that extra flap that distinguishes the Easy Version from the Fancy Version.
7. Carefully slide and tuck the flap (now coated in glue) into the opening formed between the outer wall and inner wall of the lid. See the subsequent close-up photograph for reference.



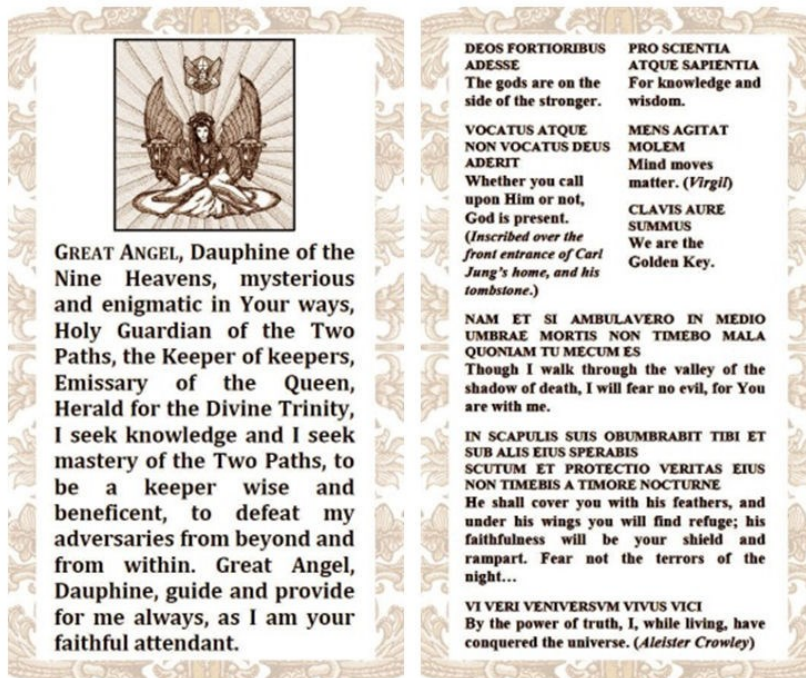
8. Continue for all four seams. Apply a thin, even layer of glue along the extra flaps and then tuck in to the in-between space between the outer wall and inner wall. Press gently together for a tight, clean seal.
9. Be sure to give your assembly work time to dry. Since only craft glue is used for the Fancy Version and glue is only applied to the concealed areas, the Fancy Version is how the deck box would be assembled professionally.
10. Follow the same steps and instructions for the bottom lid of the box.

Note. You do not have to follow these instructions exactly. There are multiple ways to assemble this box. Exercise common sense and personal judgment, and keep on referring to your regular size SKT deck box for reference. The SKT Vitruvian Mini deck box will closely resemble the design for the regular size SKT Vitruvian deck.

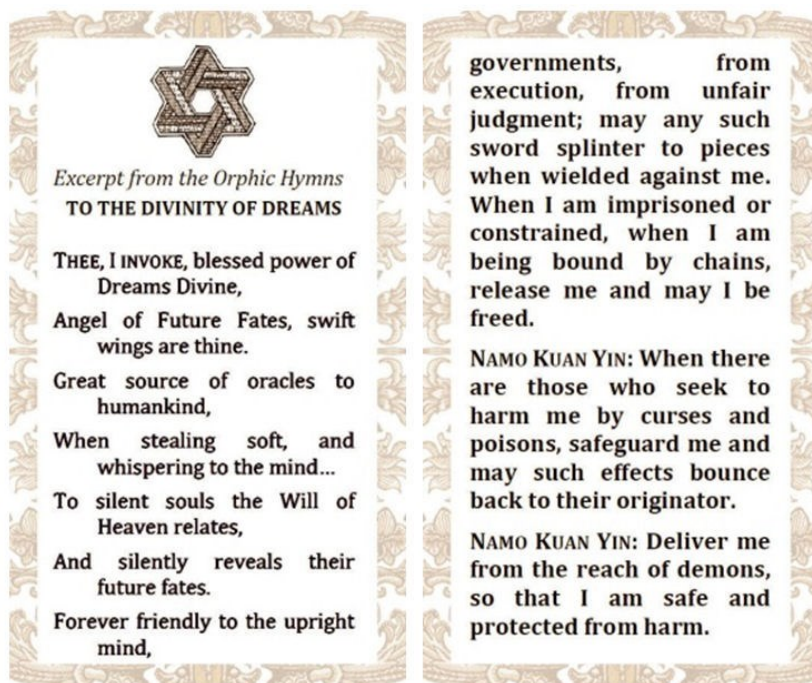


To Assemble the LWB of Prayers

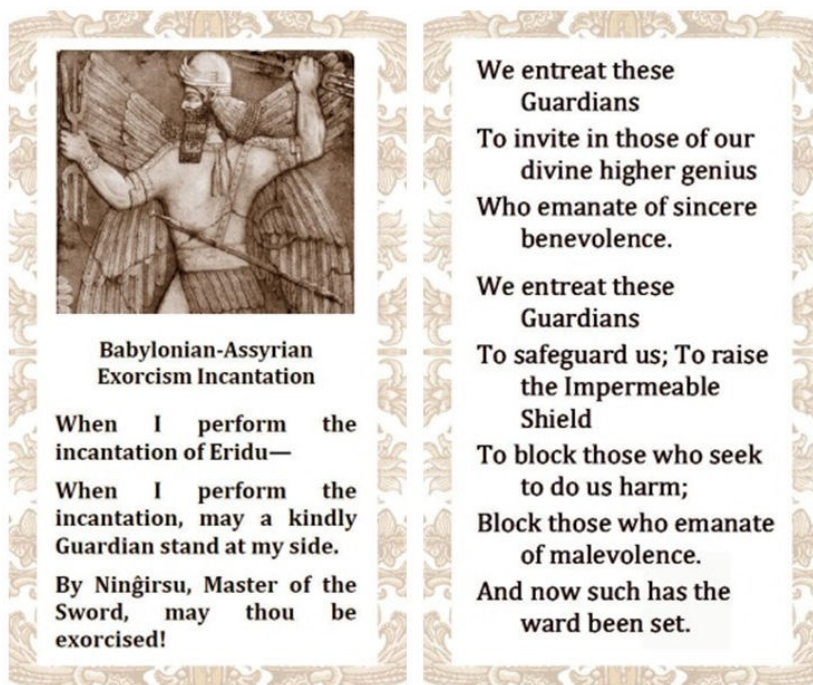
1. Start by setting down the following page spread that you've cut out from the printed pages. It should be double-sided, and the side facing up at you from your table top is what you see below.



2. The second sheet on top of that first bottom-most sheet on your table top should be the following, and the side facing up at you from your table top is what you see in the image below.

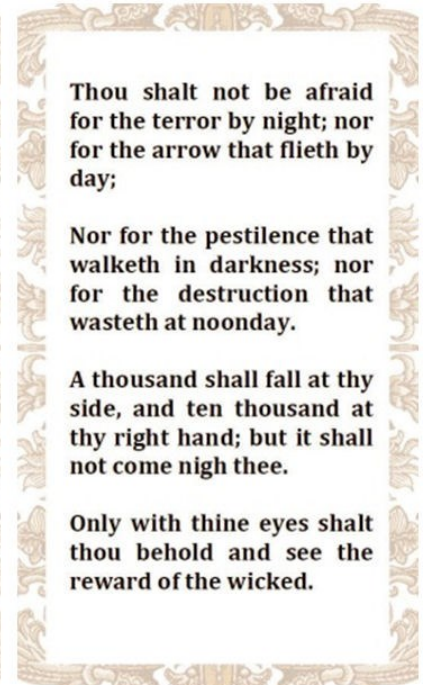
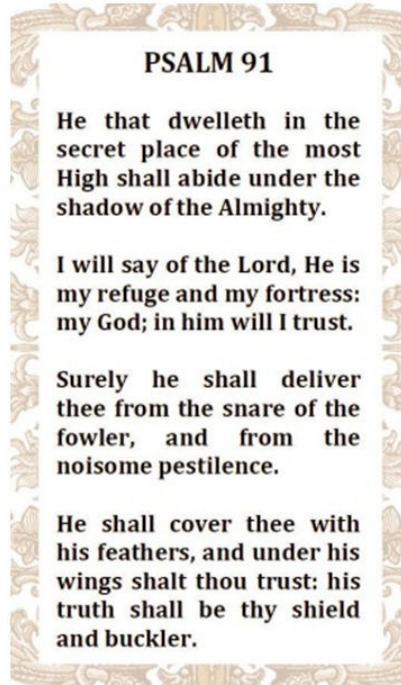
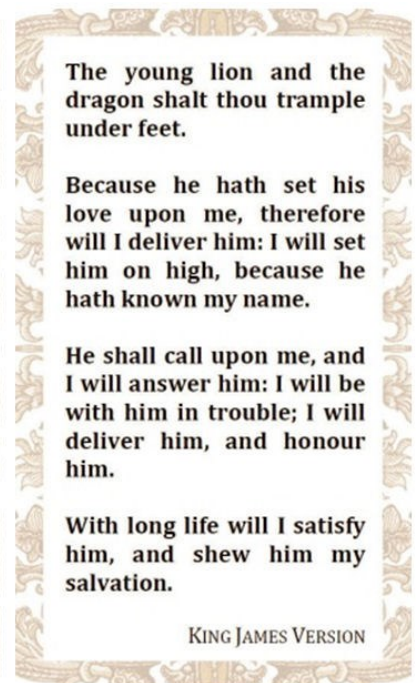
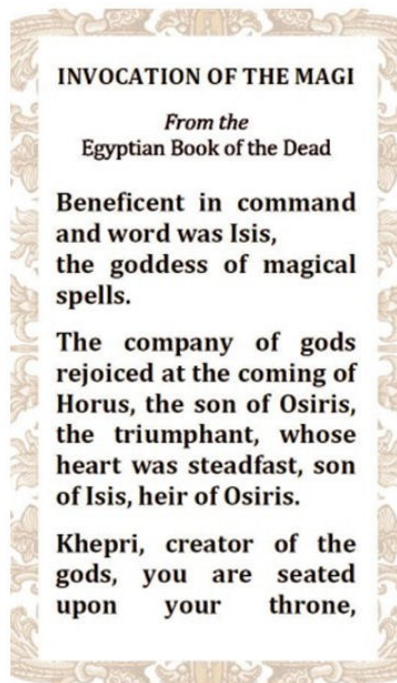


3. The third sheet on top of that second sheet should be the following, and the side facing up at you from your table top is what you see below.



4. The fourth sheet on top of the third sheet should be the following, and the side facing up at you from your table top is what you see at the top of the subsequent page. The left side of the page spread will feature the heading, "Invocation of the Magi."

5. Finally, the fifth and last sheet should be the following, and the side facing up at you from your table top is what you see in the second image to the right. The left side of the page spread will feature the heading, "Psalm 91."
6. Staple along that centerfold vertical line to bind the leaves of the LWB together. *Optional:* Score the vertical line for folding. Doing so enables a cleaner, sharper fold.
7. Fold the booklet in half. The below should now be the front cover page of your LWB.



FINAL NOTES:

There are many ways to use the printable templates I've provided to assemble your tarot deck and LWB set. You don't need to follow these instructions to the letter. These written instructions along with the video tutorial are just a starting reference for you. Once you've got the hang of how to do this, please apply your own discretion, judgment, and most of all, ingenuity.